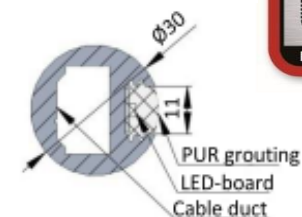
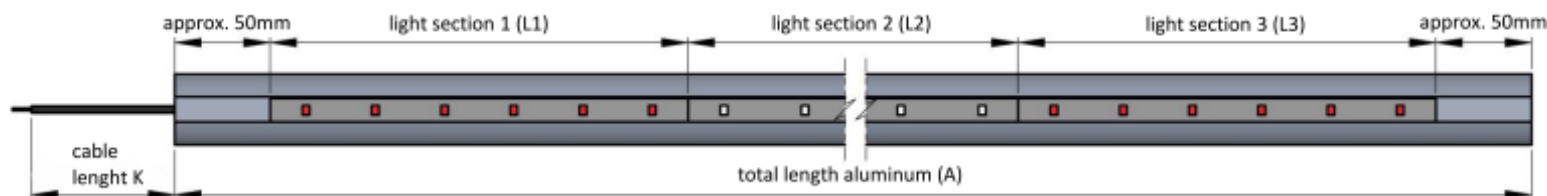
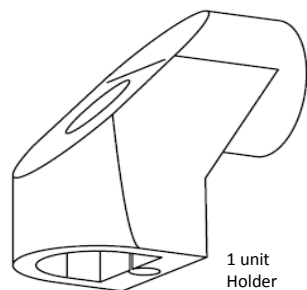


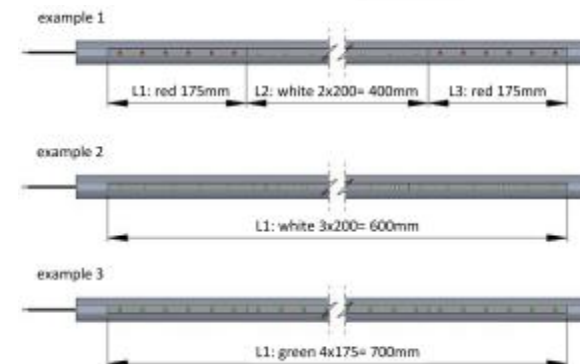
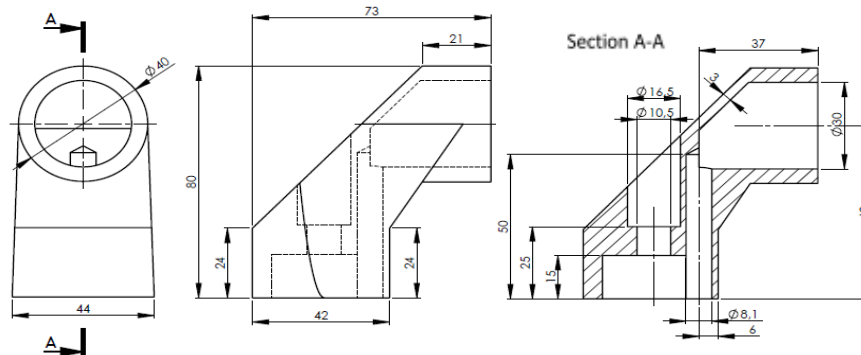
LDR LED-Line - Handle



Holder (H):



1 unit Holder
110 g



Notes on configuration:

- Please observe the required edge distance of 50 mm during configuration !
- Profile length of profile handle 30 mm is possible up to max. 5,300 mm.
- The board A30 (partition 200 mm, 30 pcs. LEDs/m) is used for this product as standard. Additional board variants: A60 (60 LEDs per metre, double luminous flux) / daylight white / colour board B30 in blue, B35 in red, green, blue and orange or RGB LEDs on request.
- The total installation length including holder (H) is A+ (2 x 52 mm).
- Grid dimension of mounting holes of holder (H) is length A+ (2 x 30 mm).
- Product weight approx. 1.2 kg/m without holder

Technical data:

- Colour temperature at A30 neutral white
- A30 (30 units LEDs per metre) B35 6 LEDs / partition
- IP protection class similar to 69 K
- Ambient temperature -40 deg. C up to +50 deg. C
- Product material: Aluminium profile powder-coated RAL 1018 (standard) or anodised E6/EV1 + polyurethane full encapsulation
- In conformity with REACH and RoHS
- Technical updates with reservation

Installation instructions

- The safety instructions in the operating and assembly instructions must be observed !
- The white main lighting of the handlebar may only be used when the vehicle is stationary. Ideally, there should be a connection to the on-board electronics, which blocks operation while the vehicle is in motion (e.g. handbrake released -> LEDs off).
- Observe the respective operating voltage at the LDR LED Line product in every operating state !
- Keep the original connection cable of the LDR LED Line profiles short !
- The electrical installation must be carried out by qualified electricians / mechatronics technicians !
- Supply lines + back-up fuses must be dimensioned according to the electrical power consumption of the LED Line products to be connected !
- Power consumption of neutral white: 12 W/m at 12 V and 12.5 W/m at 24 V

Request: O	Order: O	Customer:	Commission:	Date:		
Number of units:						
	Light colour:	Neutral white	green (527 nm)	red (625 nm)	orange (590 nm)	blue (475 nm)
	Partition	A30: 200 mm	175 mm	175 mm	120 mm	120 mm
	Power of each partition:	cf. Notes on installation	B35: 3.5 W	B35: 4.0 W	B50: 4.1 W	B50-4.2 W
Abbreviation						
A	Total length of aluminium					
L1	Light section 1					
L2	Light section 2					
L3	Light section 3					
U	Voltage 12 V OR 24 V					
K	Cable L=750 mm standard					
H	Holder / support	Yes O	No O	up to 1,300 mm (A) two part, as from 1,300 mm (A) + supports in grid approx. 700 m		
B	Surface - aluminium profile	Powder coating RAL 1018 zinc yellow: O Eloxal E6EV1: O Special colour: _____ upon request				
	Price net (EUR/unit):					
	Delivery time / deadline:					